



OTOMOTİV SANAYİİ DERNEĐİ  
AUTOMOTIVE MANUFACTURERS ASSOCIATION

# OTOMOTİV SEKTÖRÜ AYLIK DEĐERLENDİRME RAPORU HAZİRAN 2019

AUTOMOTIVE INDUSTRY MONTHLY REPORT  
June 2019

OSD "OICA" Üyesidir @OICA OSD is a Member of "OICA"

	6 - 2018	6 - 2019	%	1 - 6 / 2018	1 - 6 / 2019	%	7/2017 - 6/2018	7/2018 - 6/2019	%
Otomobil Üretimi/P.Cars Production	85.635	74.074	-13,5	557.292	492.700	-11,6	1.098.617	961.979	-12,4
Toplam Üretim/Total Production	131.194	109.116	-16,8	843.216	735.062	-12,8	1.669.785	1.442.106	-13,6
Otomobil Pazarı/P.Cars Market	41.225	36.024	-12,6	275.870	156.378	-43,3	692.705	366.829	-47,0
Toplam Pazar/Total Market	52.788	43.943	-16,8	366.563	200.901	-45,2	939.872	475.888	-49,4
Otomobil İthalatı/P.Cars Import	26.657	19.562	-26,6	183.300	88.185	-51,9	479.137	227.801	-52,5
Toplam İthalat/Total Import	31.737	23.153	-27,0	225.322	108.198	-52,0	589.620	280.144	-52,5
Otomobil İhracatı/P.Cars Export	68.030	62.846	-7,6	460.552	419.046	-9,0	877.444	833.641	-5,0
Toplam İhracat/Total Export	109.685	96.879	-11,7	687.879	634.768	-7,7	1.306.390	1.265.758	-3,1
Otomobil İhracatı(\$)/P.Cars Export (\$)	962.476.086	866.383.371	-10,0	6.550.429.192	5.757.342.745	-12,1	12.244.432.978	11.627.864.619	-5,0
Toplam İhracat(\$)/Total Export (\$)*	2.598.953.113	2.219.576.257	-14,6	16.766.312.875	15.589.465.410	-7,0	31.270.498.296	31.051.804.534	-0,7

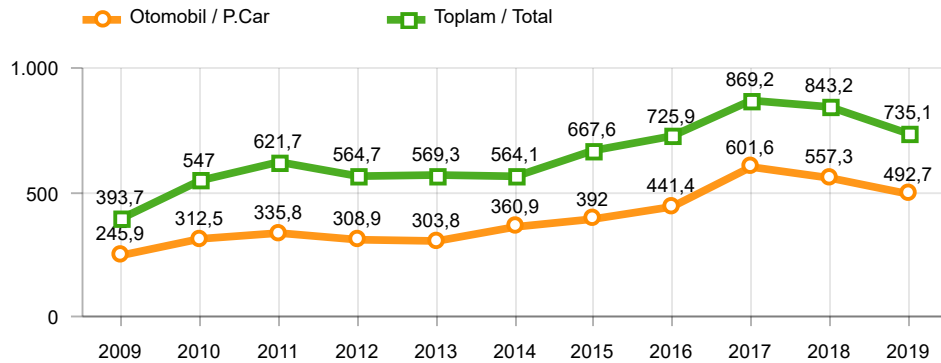
Parametreler/Parameters	6 - 2018	6 - 2019	%	1 - 6 / 2018	1 - 6 / 2019	%	7/2017 - 6/2018	7/2018 - 6/2019	%
ÜFE / PPI	3,0	0,1	-	15,5	8,1	-	16,6	32,8	-
TÜFE / CPI	2,6	0,0	-	9,2	5,0	-	11,5	19,9	-
Sanayi Endeksi / Industry Index	3,2	-0,5	-	15,2	8,2	-	17,7	31,2	-
Dolar \$ ** (1 birim)	4,6	5,8	26,6	4,0	5,6	37,9	3,8	5,5	44,2
Euro € ** (1 birim)	5,3	6,6	22,9	4,9	6,3	29,2	4,6	6,3	38,0
Japon Yeni ¥ ** (100 birim)	4,1	5,3	28,8	3,7	5,0	36,4	3,5	5,0	43,1

\*Toplam Sanayi / Total Industry Including Components

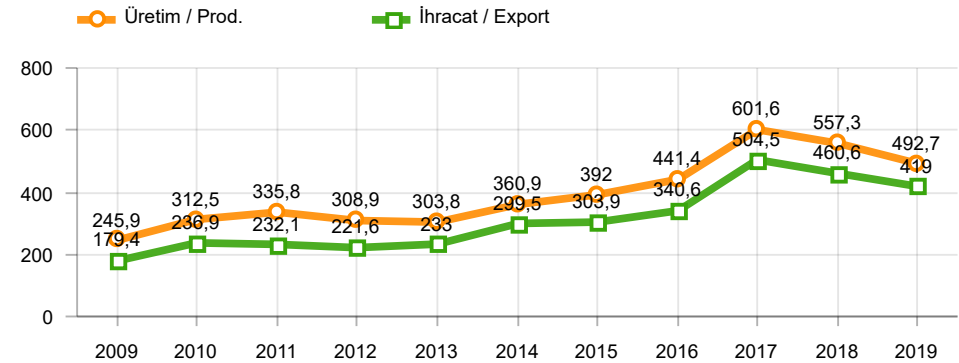
\*\* Ortalama Değerler / Average Values

Araç Tipleri / Types	6 / 2018	6 / 2019	6 % Değişim	1-6 / 2018	1-6 / 2019	1-6 % Değişim
OTOMOBİL / Pass.Car	85.635	74.074	-13,5	557.292	492.700	-11,6
<b>OTOMOBİL Toplam / Pass.Car Total</b>	<b>85.635</b>	<b>74.074</b>	<b>-13,5</b>	<b>557.292</b>	<b>492.700</b>	<b>-11,6</b>
B.KAMYON / H. Truck	2.260	1.688	-25,3	13.309	8.836	-33,6
K.KAMYON / L. Truck	280	7	-97,5	1.582	350	-77,9
KAMYONET / Pick Up	37.064	29.074	-21,6	236.752	199.135	-15,9
OTOBÜS / Bus	668	700	4,8	4.365	4.726	8,3
MİNİBÜS / Minibus	5.059	3.399	-32,8	27.910	28.240	1,2
MİDİBÜS / Midibus	228	174	-23,7	2.006	1.075	-46,4
<b>TİCARİ ARAÇLAR Toplam / Commercial Vehicles Total</b>	<b>45.559</b>	<b>35.042</b>	<b>-23,1</b>	<b>285.924</b>	<b>242.362</b>	<b>-15,2</b>
<b>TAŞIT ARAÇLARI Toplam / Motor Vehicles Total</b>	<b>131.194</b>	<b>109.116</b>	<b>-16,8</b>	<b>843.216</b>	<b>735.062</b>	<b>-12,8</b>
TRAKTÖR / F.Tractor	3.238	1.588	-51,0	25.849	10.570	-59,1
<b>TRAKTÖR Toplam / F.Tractor Total</b>	<b>3.238</b>	<b>1.588</b>	<b>-51,0</b>	<b>25.849</b>	<b>10.570</b>	<b>-59,1</b>
<b>GENEL TOPLAM / Grand Total</b>	<b>134.432</b>	<b>110.704</b>	<b>-17,7</b>	<b>869.065</b>	<b>745.632</b>	<b>-14,2</b>

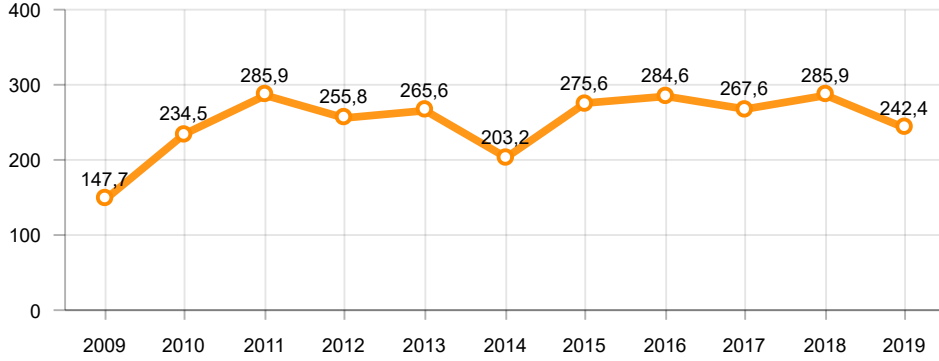
Toplam Üretim ve Otomobil Üretimi (x1000)(OCAK - HAZİRAN)  
Total & P.Cars Production (x1000)(January - June)



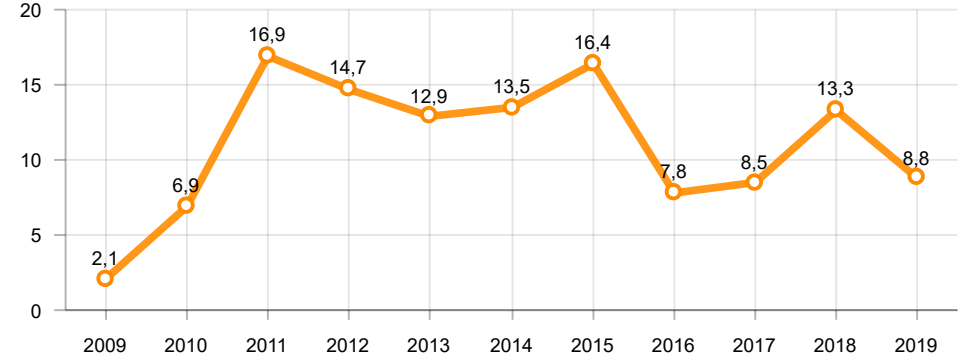
Otomobil Üretimi ve İhracat (x1000)(OCAK - HAZİRAN)  
P.Cars Production & Exports (x1000)(January - June)



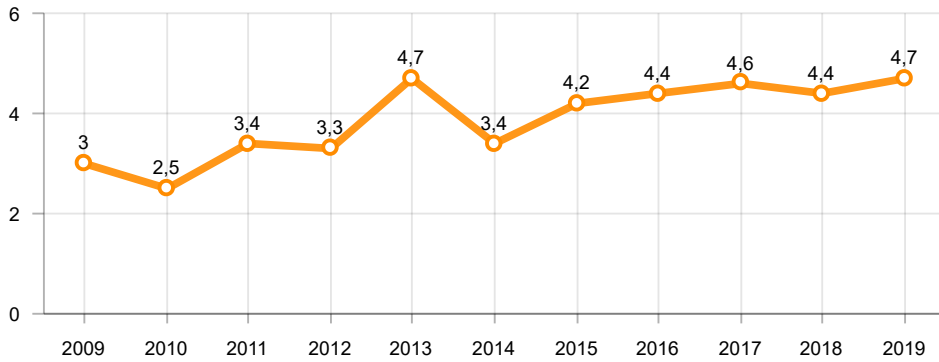
**Ticari Araç Üretimi (x1000)(OCAK - HAZİRAN)**  
Commercial Vehicle Production (x1000)(January - June)



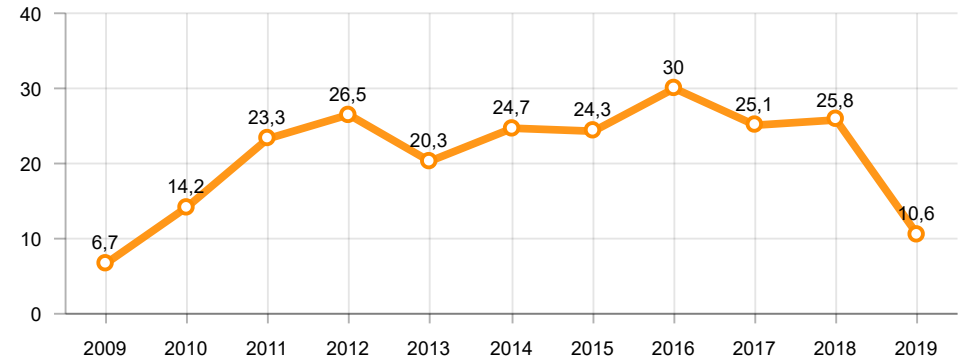
**Büyük Kamyon Üretimi (x1000)(OCAK - HAZİRAN)**  
Heavy Truck Production (x1000)(January - June)

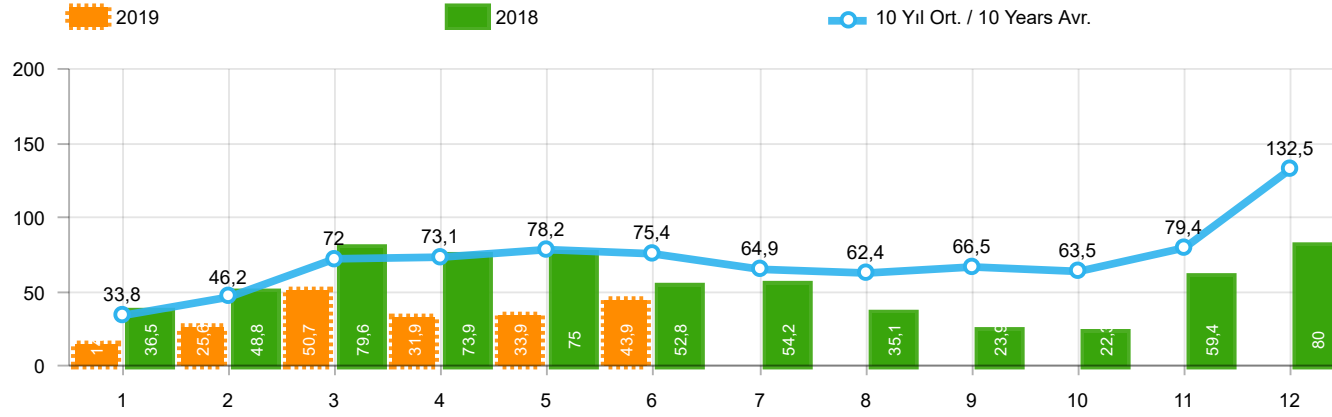


**Otobüs Üretimi (x1000)(OCAK - HAZİRAN)**  
Bus Production (x1000)(January - June)



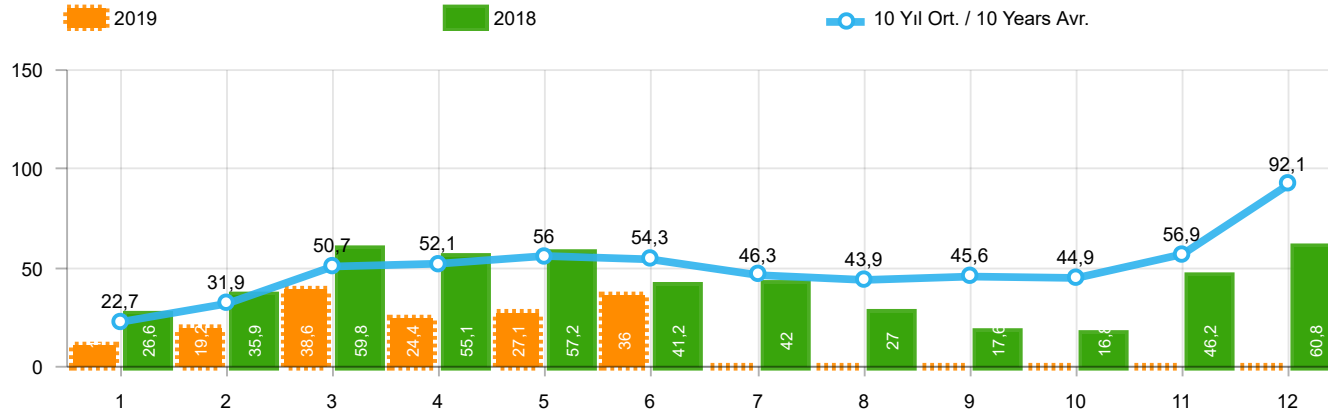
**Traktör Üretimi (x1000)(OCAK - HAZİRAN)**  
F. Tractor Production (x1000)(January - June)





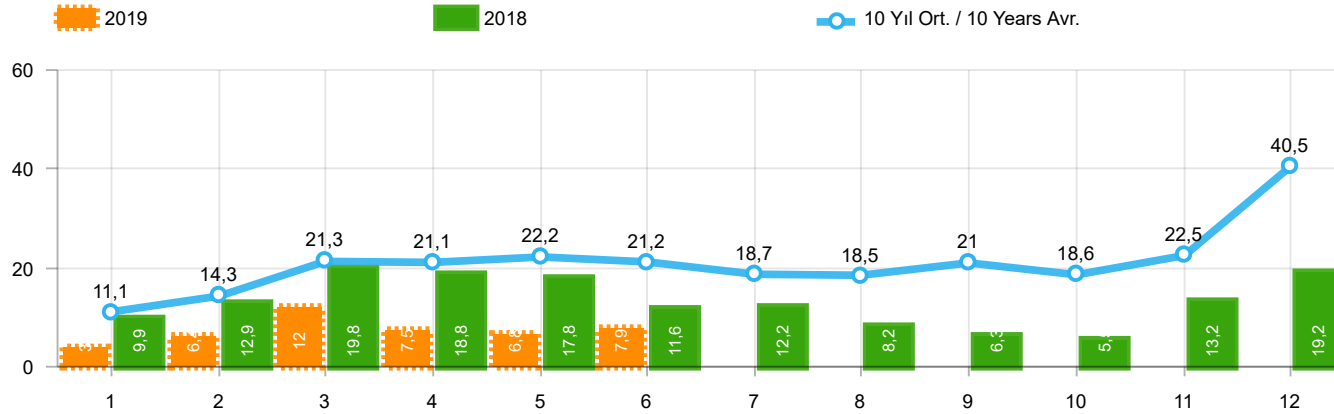
Aylar / Months	10 Yıl Ort / 10 Years Avr.	2019	%
1	33.809	14.847	-56,1
2	46.213	25.569	-44,7
3	71.956	50.651	-29,6
4	73.144	31.944	-56,3
5	78.208	33.947	-56,6
6	75.438	43.943	-41,7
TOPLAM / TOTAL	378.769	200.901	-47,0

Yıl / Year	1	2	3	4	5	6	7	8	9	10	11	12	1-6 Toplam / Total	Toplam / Total	1-6 Yerli / Local	1-6 İthal / Import	İthal Oran / Import %
2009	20.605	22.873	56.527	54.433	64.947	63.090	30.374	37.038	83.553	22.191	29.309	91.762	282.475	576.702	124.342	158.133	56,0
2010	21.070	32.331	54.019	57.241	61.837	63.511	64.011	64.961	67.040	76.753	77.488	155.234	290.009	795.496	124.340	165.669	57,1
2011	47.759	62.586	84.045	82.782	85.862	85.992	65.658	61.645	64.313	73.227	67.150	134.468	449.026	915.487	181.388	267.638	59,6
2012	31.552	44.138	69.242	66.559	75.195	75.108	65.444	60.982	73.501	62.933	75.203	121.442	361.794	821.299	140.168	221.626	61,3
2013	37.563	51.133	72.943	77.265	85.835	78.043	75.152	67.662	71.388	60.690	83.470	136.048	402.782	897.192	126.686	276.096	68,5
2014	34.751	37.659	51.312	57.113	62.447	64.295	62.770	63.303	70.764	69.742	84.368	154.843	307.577	813.367	103.125	204.452	66,5
2015	37.256	59.221	89.765	96.182	85.804	91.071	87.358	85.244	67.181	67.086	88.431	164.464	459.299	1.019.063	163.138	296.161	64,5
2016	34.369	54.840	85.932	87.748	97.090	94.666	59.732	73.654	69.413	85.666	125.462	145.706	454.645	1.014.278	152.586	302.059	66,4
2017	36.640	48.585	76.178	78.231	88.066	85.820	84.727	74.818	74.046	94.439	103.772	141.507	413.520	986.829	153.331	260.189	62,9
2018	36.525	48.768	79.600	73.886	74.996	52.788	54.194	35.137	23.915	22.321	59.406	80.014	366.563	641.550	141.241	225.322	61,5
2019	14.847	25.569	50.651	31.944	33.947	43.943							200.901	200.901	92.703	108.198	53,9



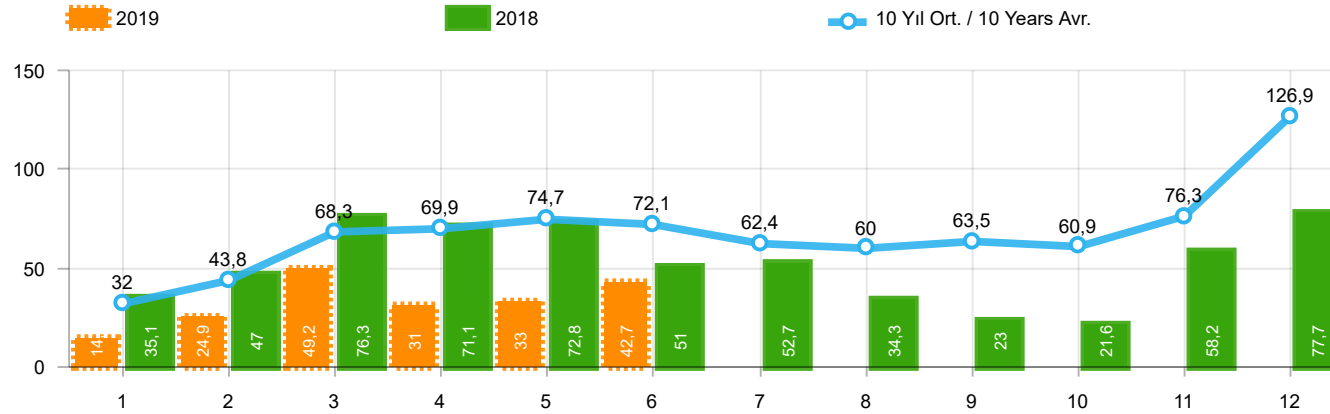
Aylar / Months	10 Yıl Ort. / 10 Years Avr.	2019	%
1	22.707	10.979	-51,6
2	31.928	19.205	-39,8
3	50.654	38.628	-23,7
4	52.093	24.416	-53,1
5	55.992	27.126	-51,6
6	54.250	36.024	-33,6
TOPLAM / TOTAL	267.624	156.378	-41,6

Yıl / Year	1	2	3	4	5	6	7	8	9	10	11	12	1-6 Toplam / Total	Toplam / Total	1-6 Yerli / Local	1-6 İthal / Import	İthal Oran / Import %
2009	13.173	14.492	40.622	36.202	44.188	41.019	16.637	22.537	52.162	13.828	17.781	57.178	189.696	369.819	64.339	125.357	66,1
2010	12.594	20.651	33.958	36.549	40.467	42.086	41.399	42.222	42.477	47.859	50.061	99.461	186.305	509.784	59.686	126.619	68,0
2011	29.868	39.004	54.023	53.835	56.302	56.714	43.518	38.875	39.964	47.508	44.951	88.957	289.746	593.519	89.601	200.145	69,1
2012	21.077	29.189	47.270	45.645	50.460	50.849	44.531	41.236	49.360	43.440	52.297	80.926	244.490	556.280	69.994	174.496	71,4
2013	25.835	36.814	51.785	56.999	62.383	58.290	55.712	51.611	52.925	46.985	64.117	101.199	292.106	664.655	63.686	228.420	78,2
2014	24.368	27.167	37.812	42.769	46.379	47.278	46.602	45.131	49.262	50.814	59.695	110.054	225.773	587.331	56.924	168.849	74,8
2015	24.498	40.817	61.676	70.211	62.878	67.766	64.218	61.753	47.088	47.954	62.397	114.340	327.846	725.596	83.639	244.207	74,5
2016	23.358	40.588	63.975	65.618	73.832	71.111	45.566	53.977	51.340	63.746	95.783	108.044	338.482	756.938	88.101	250.381	74,0
2017	25.689	34.658	55.616	57.998	65.799	66.164	62.384	54.890	53.423	70.488	75.956	99.694	305.924	722.759	95.793	210.131	68,7
2018	26.611	35.901	59.798	55.108	57.227	41.225	42.024	26.976	17.595	16.809	46.204	60.843	275.870	486.321	92.570	183.300	66,4
2019	10.979	19.205	38.628	24.416	27.126	36.024							156.378	156.378	68.193	88.185	56,4



Aylar / Months	10 Yıl Ort. / 10 Years Avr.	2019	%
1	11.102	3.868	-65,2
2	14.285	6.364	-55,5
3	21.303	12.023	-43,6
4	21.051	7.528	-64,2
5	22.216	6.821	-69,3
6	21.188	7.919	-62,6
TOPLAM / TOTAL	111.145	44.523	-59,9

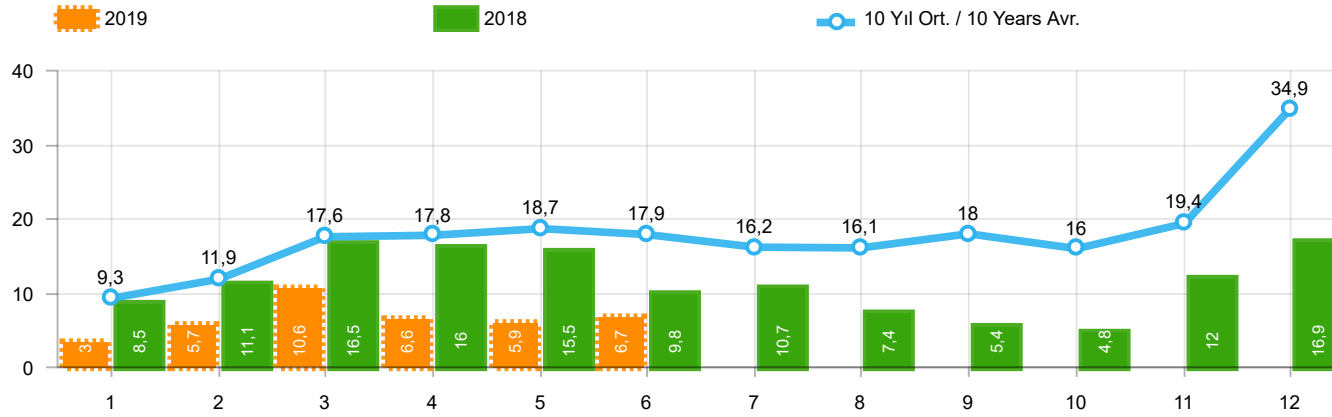
Yıl / Year	1	2	3	4	5	6	7	8	9	10	11	12	1-6 Toplam / Total	Toplam / Total	1-6 Yerli / Local	1-6 İthal / Import	İthal Oran / Import %
2009	7.432	8.381	15.905	18.231	20.759	22.071	13.737	14.501	31.391	8.363	11.528	34.584	92.779	206.883	60.003	32.776	35,3
2010	8.476	11.680	20.061	20.692	21.370	21.425	22.612	22.739	24.563	28.894	27.427	55.773	103.704	285.712	64.654	39.050	37,7
2011	17.891	23.582	30.022	28.947	29.560	29.278	22.140	22.770	24.349	25.719	22.199	45.511	159.280	321.968	91.787	67.493	42,4
2012	10.475	14.949	21.972	20.914	24.735	24.259	20.913	19.746	24.141	19.493	22.906	40.516	117.304	265.019	70.174	47.130	40,2
2013	11.728	14.319	21.158	20.266	23.452	19.753	19.440	16.051	18.463	13.705	19.353	34.849	110.676	232.537	63.000	47.676	43,1
2014	10.383	10.492	13.500	14.344	16.068	17.017	16.168	18.172	21.502	18.928	24.673	44.789	81.804	226.036	46.201	35.603	43,5
2015	12.758	18.404	28.089	25.971	22.926	23.305	23.140	23.491	20.093	19.132	26.034	50.124	131.453	293.467	79.499	51.954	39,5
2016	11.011	14.252	21.957	22.130	23.258	23.555	14.166	19.677	18.073	21.920	29.679	37.662	116.163	257.340	64.485	51.678	44,5
2017	10.951	13.927	20.562	20.233	22.267	19.656	22.343	19.928	20.623	23.951	27.816	41.813	107.596	264.070	57.538	50.058	46,5
2018	9.914	12.867	19.802	18.778	17.769	11.563	12.170	8.161	6.320	5.512	13.202	19.171	90.693	155.229	48.671	42.022	46,3
2019	3.868	6.364	12.023	7.528	6.821	7.919							44.523	44.523	24.510	20.013	44,9



Aylar / Months	10 Yıl Ort. / 10 Years Avr.	2019	%
1	32.006	14.373	-55,1
2	43.836	24.875	-43,3
3	68.292	49.221	-27,9
4	69.871	30.971	-55,7
5	74.729	33.016	-55,8
6	72.126	42.688	-40,8
TOPLAM / TOTAL	360.859	195.144	-45,9

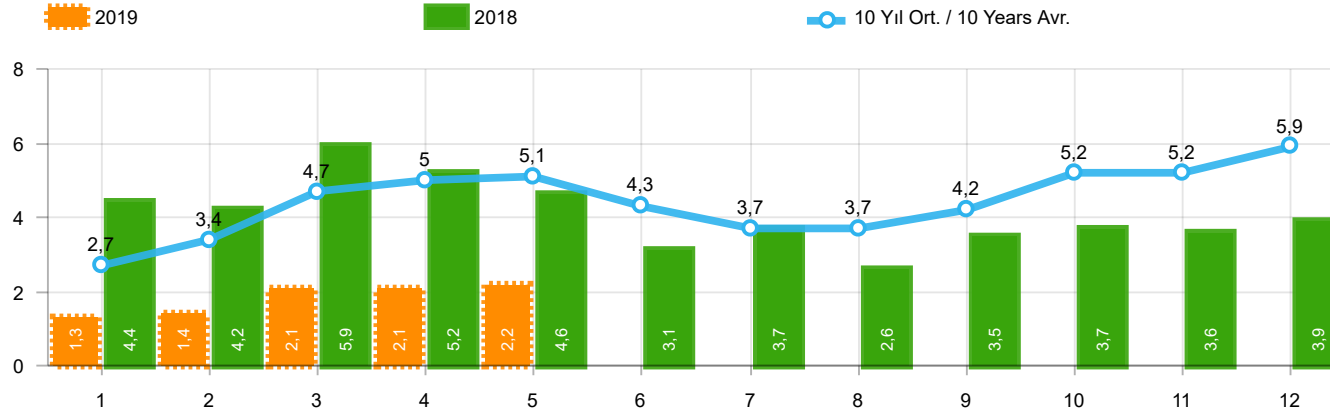
Yıl / Year	1	2	3	4	5	6	7	8	9	10	11	12	1-6 Toplam / Total	Toplam / Total	1-6 Yerli / Local	1-6 İthal / Import	İthal Oran / Import %
2009	19.606	21.742	55.111	52.640	63.191	61.067	28.845	35.609	81.397	21.033	27.962	88.923	273.357	557.126	116.483	156.874	57,4
2010	20.095	31.172	51.769	54.946	59.377	60.896	61.345	61.764	63.814	73.404	73.962	148.369	278.255	760.913	115.458	162.797	58,5
2011	44.892	58.663	78.403	77.695	80.646	81.573	63.044	58.406	60.129	69.421	63.657	127.910	421.872	864.439	162.944	258.928	61,4
2012	29.545	41.324	64.884	62.949	70.863	71.067	62.304	58.148	69.629	59.938	71.710	115.400	340.632	777.761	124.724	215.908	63,4
2013	35.523	48.307	68.774	73.575	81.468	74.096	71.596	65.043	67.963	58.014	79.301	129.718	381.743	853.378	110.647	271.096	71,0
2014	32.670	35.021	47.581	53.305	58.121	60.163	59.907	60.199	66.531	66.573	80.621	146.989	286.861	767.681	87.190	199.671	69,6
2015	34.615	55.331	83.302	91.602	81.542	86.158	83.836	82.577	64.025	64.255	84.601	156.173	432.550	968.017	143.052	289.498	66,9
2016	32.713	52.825	82.948	84.887	93.904	91.540	58.533	71.556	67.593	83.000	122.309	141.912	438.817	983.720	140.957	297.860	67,9
2017	35.323	46.965	73.802	75.988	85.422	83.658	82.297	72.536	71.352	91.752	100.859	136.240	401.158	956.194	144.000	257.158	64,1
2018	35.076	47.009	76.345	71.126	72.755	51.037	52.734	34.346	23.028	21.571	58.204	77.706	353.348	620.937	132.507	220.841	62,5
2019	14.373	24.875	49.221	30.971	33.016	42.688							195.144	195.144	88.809	106.335	54,5





Aylar / Months	10 Yıl Ort. / 10 Years Avr.	2019	%
1	9.299	3.394	-63,5
2	11.908	5.670	-52,4
3	17.638	10.593	-39,9
4	17.778	6.555	-63,1
5	18.737	5.890	-68,6
6	17.875	6.664	-62,7
TOPLAM / TOTAL	93.236	38.766	-58,4

Yıl / Year	1	2	3	4	5	6	7	8	9	10	11	12	1-6 Toplam / Total	Toplam / Total	1-6 Yerli / Local	1-6 İthal / Import	İthal Oran / Import %
2009	6.433	7.250	14.489	16.438	19.003	20.048	12.208	13.072	29.235	7.205	10.181	31.745	83.661	187.307	52.144	31.517	37,7
2010	7.501	10.521	17.811	18.397	18.910	18.810	19.946	19.542	21.337	25.545	23.901	48.908	91.950	251.129	55.772	36.178	39,3
2011	15.024	19.659	24.380	23.860	24.344	24.859	19.526	19.531	20.165	21.913	18.706	38.953	132.126	270.920	73.343	58.783	44,5
2012	8.468	12.135	17.614	17.304	20.403	20.218	17.773	16.912	20.269	16.498	19.413	34.474	96.142	221.481	54.730	41.412	43,1
2013	9.688	11.493	16.989	16.576	19.085	15.806	15.884	13.432	15.038	11.029	15.184	28.519	89.637	188.723	46.961	42.676	47,6
2014	8.302	7.854	9.769	10.536	11.742	12.885	13.305	15.068	17.269	15.759	20.926	36.935	61.088	180.350	30.266	30.822	50,5
2015	10.117	14.514	21.626	21.391	18.664	18.392	19.618	20.824	16.937	16.301	22.204	41.833	104.704	242.421	59.413	45.291	43,3
2016	9.355	12.237	18.973	19.269	20.072	20.429	12.967	17.579	16.253	19.254	26.526	33.868	100.335	226.782	52.856	47.479	47,3
2017	9.634	12.307	18.186	17.990	19.623	17.494	19.913	17.646	17.929	21.264	24.903	36.546	95.234	233.435	48.207	47.027	49,4
2018	8.465	11.108	16.547	16.018	15.528	9.812	10.710	7.370	5.433	4.762	12.000	16.863	77.478	134.616	39.937	37.541	48,5
2019	3.394	5.670	10.593	6.555	5.890	6.664							38.766	38.766	20.616	18.150	46,8



Aylar / Months	10 Yıl Ort. / 10 Years Avr.	2019	%
1	2.669	1.311	-50,9
2	3.359	1.401	-58,3
3	4.700	2.143	-54,4
4	5.046	2.126	-57,9
5	5.116	2.229	-56,4
<b>TOPLAM / TOTAL</b>	<b>20.890</b>	<b>9.210</b>	<b>-55,9</b>

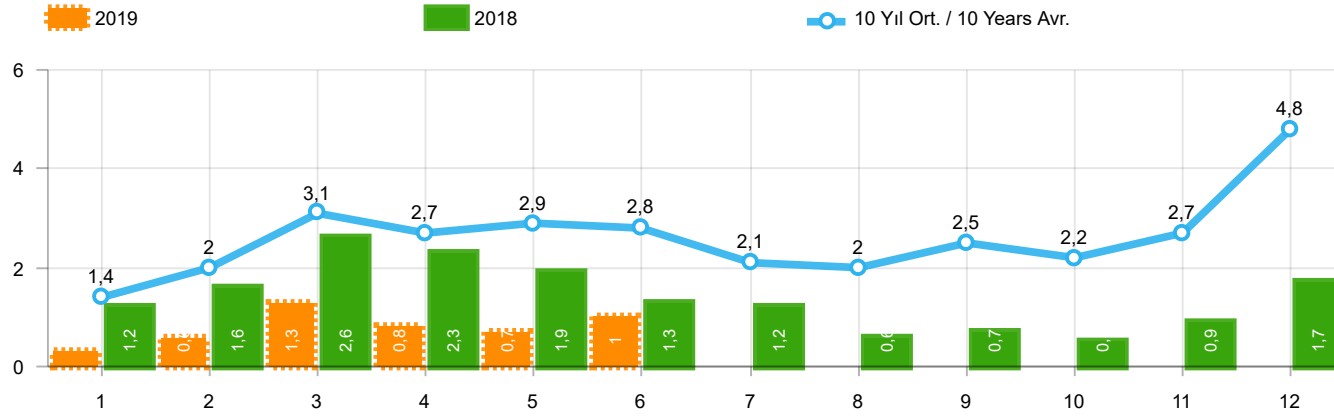
Yıl / Year	1	2	3	4	5	6	7	8	9	10	11	12	1-5 Toplam / Total	Toplam / Total
2009	717	572	688	1.070	1.297	1.256	1.054	1.183	1.117	1.356	1.304	2.144	4.344	13.758
2010	1.111	1.991	2.330	3.039	2.567	2.638	1.965	3.019	2.806	4.424	3.978	6.168	11.038	36.036
2011	2.975	5.242	5.927	5.358	6.016	6.335	4.534	4.051	4.140	5.828	4.943	4.992	25.518	60.341
2012	2.362	1.983	4.348	6.579	6.273	4.569	3.837	3.158	3.618	4.027	4.807	4.757	21.545	50.318
2013	2.161	2.432	4.005	4.585	5.616	3.136	4.574	3.408	4.935	4.762	5.781	6.891	18.799	52.286
2014	2.169	3.512	4.476	4.905	5.094	5.028	4.233	4.920	5.619	5.743	6.250	7.409	20.156	59.358
2015	3.124	3.984	5.460	6.383	6.078	5.748	4.677	5.044	4.765	7.049	6.898	7.564	25.029	66.774
2016	3.739	4.731	7.067	6.546	6.575	5.543	3.833	5.134	4.945	7.372	7.090	7.603	28.658	70.178
2017	3.974	4.964	6.773	6.780	7.057	5.356	5.003	4.396	6.064	7.734	7.457	7.351	29.548	72.909
2018	4.362	4.179	5.925	5.216	4.584	3.146	3.654	2.587	3.541	3.698	3.578	3.886	24.266	48.356
2019	1.311	1.401	2.143	2.126	2.229	-	-	-	-	-	-	-	9.210	9.210

Kaynak: TÜİK trafik kayıtları.

Rakamlar, son iki model yılına ait traktör tescillerinden oluşmaktadır.

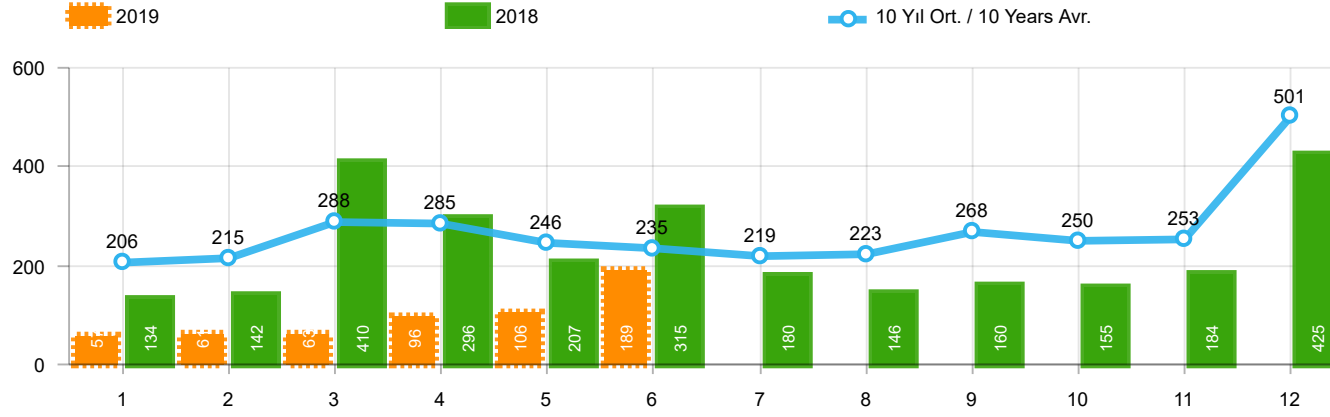
Source: Turkish Statistical Institute – Traffic registrations

Data represents the last two model year's farm tractors registration figures



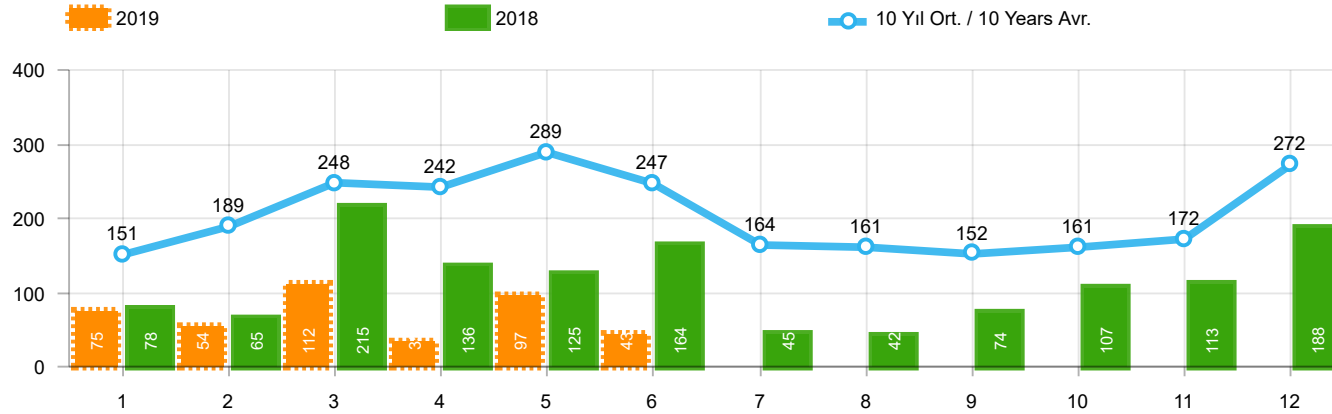
Aylar / Months	10 Yıl Ort. / 10 Years Avr.	2019	%
1	1.446	342	-76,3
2	1.974	579	-70,7
3	3.128	1.255	-59,9
4	2.746	842	-69,3
5	2.944	728	-75,3
6	2.831	1.023	-63,9
TOPLAM / TOTAL	15.068	4.769	-68,4

Yıl / Year	1	2	3	4	5	6	7	8	9	10	11	12	1-6 Toplam / Total	Toplam / Total	1-6 Yerli / Local	1-6 İthal / Import	İthal Oran / Import %
2009	782	763	1.062	1.381	1.426	1.649	1.261	1.164	1.862	963	1.047	2.368	7.063	15.728	5.844	1.219	17,3
2010	768	960	1.950	1.949	2.140	2.314	2.403	2.754	2.864	3.001	3.231	6.158	10.081	30.492	7.249	2.832	28,1
2011	2.651	3.544	5.142	4.503	4.563	3.852	2.261	2.745	3.784	3.400	3.149	5.712	24.255	45.306	15.616	8.639	35,6
2012	1.703	2.454	3.866	3.209	3.678	3.540	2.750	2.403	3.296	2.497	3.154	5.300	18.450	37.850	12.758	5.692	30,9
2013	1.484	2.113	3.343	2.925	3.504	3.186	2.777	2.103	2.875	2.086	3.631	5.444	16.555	35.471	11.564	4.991	30,1
2014	1.522	2.065	3.094	3.224	3.727	3.726	2.578	2.783	3.708	2.858	3.384	6.869	17.358	39.538	12.720	4.638	26,7
2015	2.215	3.346	5.699	3.729	3.600	4.253	2.922	2.211	2.687	2.266	3.146	7.307	22.842	43.381	16.240	6.602	28,9
2016	1.167	1.648	2.515	2.319	2.711	2.623	984	1.796	1.438	2.238	2.485	3.127	12.983	25.051	8.815	4.168	32,1
2017	931	1.290	1.982	1.888	2.184	1.891	1.974	1.860	2.284	2.188	2.487	4.438	10.166	25.397	7.147	3.019	29,7
2018	1.237	1.552	2.630	2.328	1.909	1.272	1.235	603	653	488	905	1.695	10.928	16.507	6.458	4.470	40,9
2019	342	579	1.255	842	728	1.023							4.769	4.769	2.906	1.863	39,1



Aylar / Months	10 Yıl Ort / 10 Years Avr.	2019	%
1	206	57	-72,4
2	215	61	-71,6
3	288	63	-78,1
4	285	96	-66,3
5	246	106	-56,9
6	235	189	-19,6
TOPLAM / TOTAL	1.475	572	-61,2

Yıl / Year	1	2	3	4	5	6	7	8	9	10	11	12	1-6 Toplam / Total	Toplam / Total
2009	133	103	153	210	145	183	138	146	152	134	150	280	927	1.927
2010	140	128	172	153	127	124	93	232	199	204	162	382	844	2.116
2011	124	167	267	260	241	233	205	280	270	230	168	525	1.292	2.970
2012	179	257	277	229	257	239	216	249	325	269	189	398	1.438	3.084
2013	191	268	289	276	283	241	367	235	305	392	415	697	1.548	3.959
2014	360	394	384	333	294	258	216	229	395	220	266	653	2.023	4.002
2015	280	322	451	561	372	405	389	253	316	394	325	621	2.391	4.689
2016	309	158	251	302	261	196	139	220	241	230	354	431	1.477	3.092
2017	212	211	227	231	272	156	250	235	318	268	317	594	1.309	3.291
2018	134	142	410	296	207	315	180	146	160	155	184	425	1.504	2.754
2019	57	61	63	96	106	189							572	572

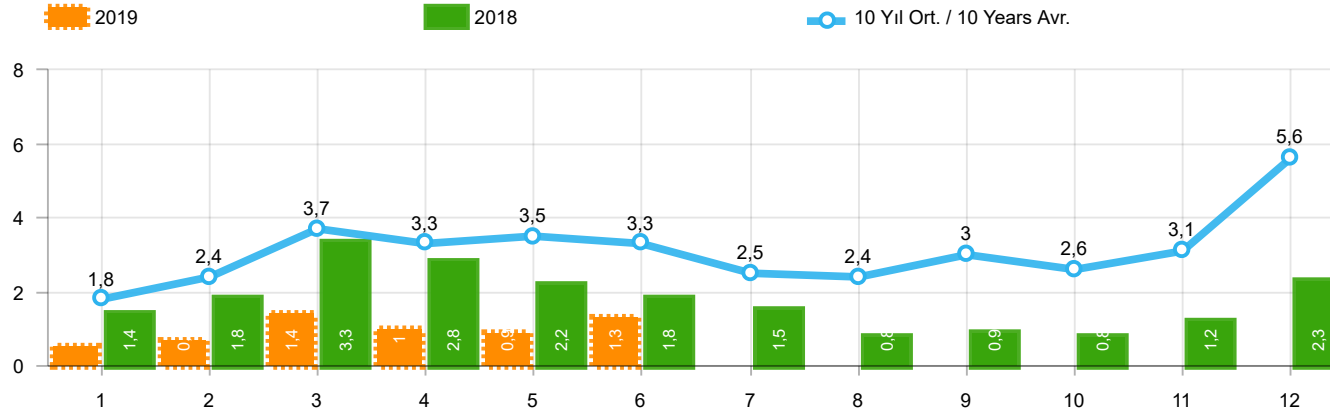


Aylar / Months	10 Yıl Ort. / 10 Years Avr.	2019	%
1	151	75	-50,3
2	189	54	-71,4
3	248	112	-54,8
4	242	35	-85,5
5	289	97	-66,4
6	247	43	-82,6
TOPLAM / TOTAL	1.366	416	-69,6

Yıl / Year	1	2	3	4	5	6	7	8	9	10	11	12	1-6 Toplam / Total	Toplam / Total	1-6 Yerli / Local	1-6 İthal / Import	İthal Oran / Import %
2009	84	265	201	202	185	191	130	119	142	61	150	191	1.128	1.921	1.088	40	3,5
2010	67	71	128	193	193	177	170	211	163	144	133	325	829	1.975	789	40	4,8
2011	92	212	233	324	412	334	148	214	130	176	176	321	1.607	2.772	1.536	71	4,4
2012	125	103	215	172	397	262	174	182	251	229	150	344	1.274	2.604	1.248	26	2,0
2013	365	445	537	489	580	520	412	281	245	198	123	189	2.936	4.384	2.927	9	0,3
2014	199	179	253	251	305	148	69	92	130	91	97	332	1.335	2.146	1.192	143	10,7
2015	146	222	313	290	290	255	211	203	153	171	359	363	1.516	2.976	1.455	61	4,0
2016	180	209	218	240	214	307	76	82	141	198	314	236	1.368	2.415	1.337	31	2,3
2017	174	119	167	124	188	115	206	187	92	231	109	235	887	1.947	875	12	1,4
2018	78	65	215	136	125	164	45	42	74	107	113	188	783	1.352	772	11	1,4
2019	75	54	112	35	97	43							416	416	416	-	-

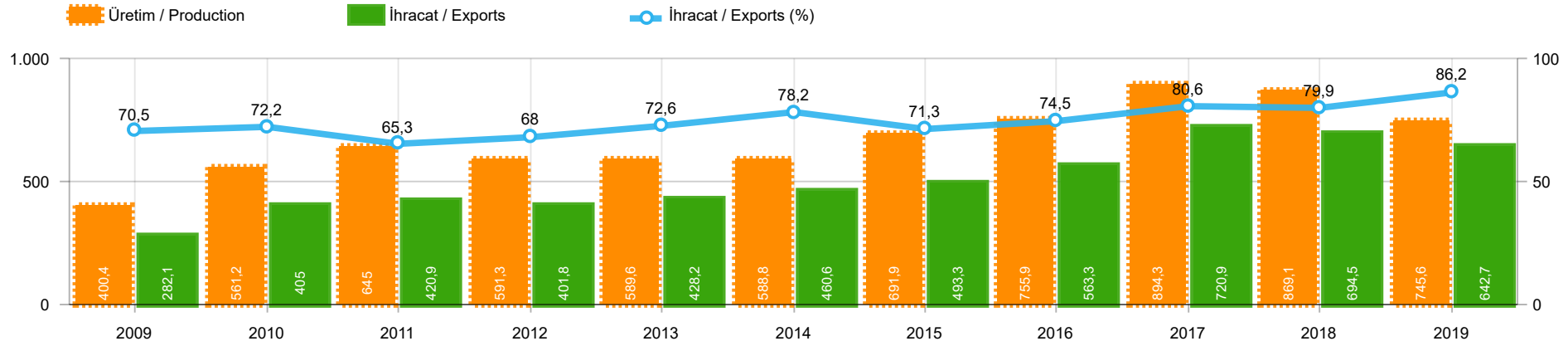
Kaynak: OSD, TÜİK

Herhangi bir Dernek üyeliği olmayan markalara ilişkin satış verisi için TÜİK trafik kayıtları esas alınmaktadır. TÜİK trafik kayıtlarının bir ay gecikmeli yayınlanması nedeniyle ilgili markalara ilişkin son ayın satış verisi bir önceki ay ile aynı kabul edilmekte ve bir sonraki ay gerçekleşen veri ile güncellenmektedir.



Aylar / Months	10 Yıl Ort / 10 Years Avr.	2019	%
1	1.803	474	-73,7
2	2.378	694	-70,8
3	3.664	1.430	-61,0
4	3.273	973	-70,3
5	3.479	931	-73,2
6	3.313	1.255	-62,1
TOPLAM / TOTAL	17.910	5.757	-67,9

Yıl / Year	1	2	3	4	5	6	7	8	9	10	11	12	1-6 Toplam / Total	Toplam / Total	1-6 Yerli / Local	1-6 İthal / Import	İthal Oran / Import %
2009	999	1.131	1.416	1.793	1.756	2.023	1.529	1.429	2.156	1.158	1.347	2.839	9.118	19.576	7.859	1.259	13,8
2010	975	1.159	2.250	2.295	2.460	2.615	2.666	3.197	3.226	3.349	3.526	6.865	11.754	34.583	8.882	2.872	24,4
2011	2.867	3.923	5.642	5.087	5.216	4.419	2.614	3.239	4.184	3.806	3.493	6.558	27.154	51.048	18.444	8.710	32,1
2012	2.007	2.814	4.358	3.610	4.332	4.041	3.140	2.834	3.872	2.995	3.493	6.042	21.162	43.538	15.444	5.718	27,0
2013	2.040	2.826	4.169	3.690	4.367	3.947	3.556	2.619	3.425	2.676	4.169	6.330	21.039	43.814	16.039	5.000	23,8
2014	2.081	2.638	3.731	3.808	4.326	4.132	2.863	3.104	4.233	3.169	3.747	7.854	20.716	45.686	15.935	4.781	23,1
2015	2.641	3.890	6.463	4.580	4.262	4.913	3.522	2.667	3.156	2.831	3.830	8.291	26.749	51.046	20.086	6.663	24,9
2016	1.656	2.015	2.984	2.861	3.186	3.126	1.199	2.098	1.820	2.666	3.153	3.794	15.828	30.558	11.629	4.199	26,5
2017	1.317	1.620	2.376	2.243	2.644	2.162	2.430	2.282	2.694	2.687	2.913	5.267	12.362	30.635	9.331	3.031	24,5
2018	1.449	1.759	3.255	2.760	2.241	1.751	1.460	791	887	750	1.202	2.308	13.215	20.613	8.734	4.481	33,9
2019	474	694	1.430	973	931	1.255							5.757	5.757	3.894	1.863	32,4



	2009	2010	2011	2012	2013	2014	2015	2016	2017	2018	2019
<b>İhracat/Export</b>	282.136	404.957	420.850	401.791	428.208	460.644	493.268	563.286	720.907	694.465	642.680
<b>Üretim/Production</b>	400.360	561.225	644.956	591.263	589.623	588.753	691.907	755.920	894.257	869.065	745.632
<b>İhracat/Exports (%)</b>	70,5	72,2	65,3	68	72,6	78,2	71,3	74,5	80,6	79,9	86,2

**Taşıt Araçları İhracatı (2017 - 2019)**  
Motor Vehicle Exports (2017 - 2019)

SEKTÖR / SECTOR	2017	2018	1/6-2018	1/6-2019	2019/2018 %
OTOMOBİL / Pass.Car	921.354	875.147	460.552	419.046	-9,0
<b>OTOMOBİL TOPLAM / Pass. Car Total</b>	<b>921.354</b>	<b>875.147</b>	<b>460.552</b>	<b>419.046</b>	<b>-9,0</b>
KAMYON / Truck	7.800	14.478	6.142	7.746	26,1
KAMYONET / Pick Up	350.108	372.954	195.364	177.869	-9,0
OTOBÜS / Bus	7.028	7.708	3.625	4.620	27,4
MİNİBÜS / Minibus	45.794	47.736	21.865	24.893	13,8
MİDİBÜS / Midibus	710	846	331	594	79,5
<b>TİCARİ ARAÇLAR TOPLAM / Commercial Vehicle Total</b>	<b>411.440</b>	<b>443.722</b>	<b>227.327</b>	<b>215.722</b>	<b>-5,1</b>
<b>TAŞIT ARAÇLARI TOPLAM / Motor Vehicles Total</b>	<b>1.332.794</b>	<b>1.318.869</b>	<b>687.879</b>	<b>634.768</b>	<b>-7,7</b>
TRAKTÖR / F.Tractor	13.123	15.123	6.586	7.912	20,1
<b>TRAKTÖR TOPLAM / F.Tractor Total</b>	<b>13.123</b>	<b>15.123</b>	<b>6.586</b>	<b>7.912</b>	<b>20,1</b>
<b>GENEL TOPLAM / GRAND TOTAL</b>	<b>1.345.917</b>	<b>1.333.992</b>	<b>694.465</b>	<b>642.680</b>	<b>-7,5</b>

**Üretici Bazında İhracat (adet)**  
Exports by Manufacturer (unit)

Üreticiler / Manufacturers	2017	2018	1-6 / 2018	1-6 / 2019
A.I.O.S.	700	964	382	855
FORD OTOSAN	296.840	328.502	164.929	167.324
HATTAT TRAKTÖR	1.100	621	288	350
HONDA TÜRKİYE	9.391	13.699	8.680	3.611
HYUNDAI ASSAN	204.382	190.347	98.346	81.314
KARSAN	2.969	3.419	1.714	929
M. BENZ TÜRK	9.865	16.309	7.239	8.505
MAN TÜRKİYE	2.007	2.425	1.322	1.516
OTOKAR	691	901	215	648
OYAK RENAULT	287.915	280.411	147.119	150.742
TEMSA	870	645	173	253
TOFAŞ	270.698	243.796	140.291	102.807
TOYOTA	246.466	237.451	117.469	116.264
TÜRK TRAKTÖR	12.023	14.502	6.298	7.562
<b>GENEL TOPLAM / Grand Total</b>	<b>1.345.917</b>	<b>1.333.992</b>	<b>694.465</b>	<b>642.680</b>



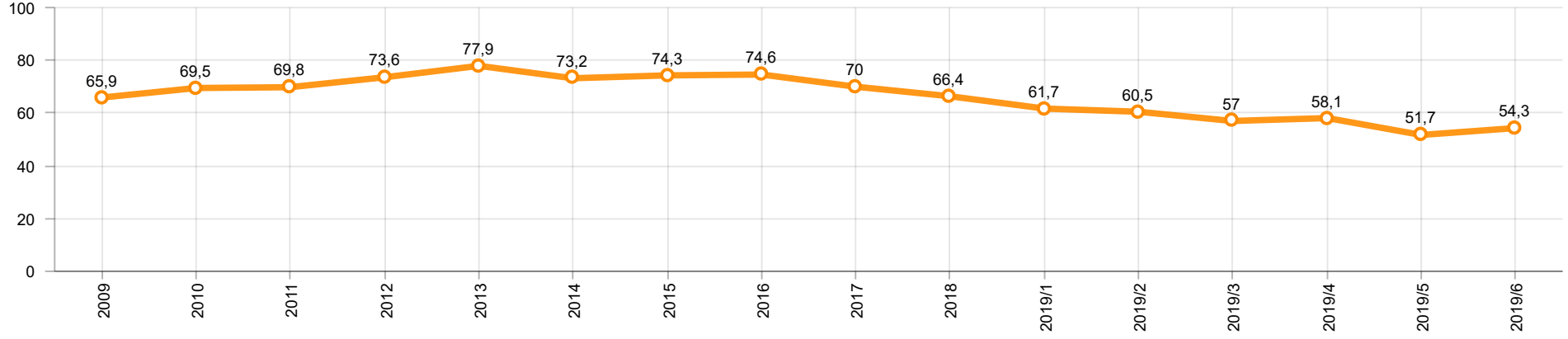
**Otomotiv Ana ve Yan Sanayii İhracatı (ABD \$)**  
CBU and CKD Exports - \$

Sektör / Sector	2017	2018	OCAK - HAZİRAN / January - June 2018	OCAK - HAZİRAN / January - June 2019	2019 / 2018 %
<b>Toplam Yan Sanayi / Total Component Industry</b>	<b>9.835.914.658</b>	<b>10.881.562.512</b>	<b>5.755.611.912</b>	<b>5.381.312.650</b>	<b>-6,5</b>
İç ve Dış Lastik / Tyres	1.131.782.300	1.353.896.118	695.529.087	724.540.710	4,2
Emniyet Camı / Safety Glasses	136.486.099	151.148.689	79.797.754	75.363.551	-5,6
Motor / Engine	486.426.738	581.983.113	343.468.587	284.439.681	-17,2
Akümülatör / Batteries	295.794.286	388.107.835	164.421.251	185.535.308	12,8
Diğer Aksam ve Parça / Spare Parts&Components	7.785.425.235	8.406.426.757	4.472.395.233	4.111.433.400	-8,1
<b>Toplam Ana Sanayi / Total Vehicle Industry</b>	<b>19.257.086.833</b>	<b>21.350.315.330</b>	<b>11.010.700.963</b>	<b>10.208.152.760</b>	<b>-7,3</b>
Otobüs / Bus	1.308.249.224	1.503.188.826	692.583.697	883.374.431	27,5
Midibüs-Minibüs / Midibus-Minibus	217.704.499	215.450.022	114.227.554	76.081.486	-33,4
Otomobil / P.Cars	11.790.577.760	12.420.951.066	6.550.429.192	5.757.342.745	-12,1
Kamyon-Kamyonet / Truck-Pick Up&Van	4.849.022.718	5.376.446.529	2.839.289.861	2.557.490.559	-9,9
Römork ve Yarı Römork / Trailer-Semi Trailer	342.793.231	507.186.149	244.004.383	279.039.471	14,4
Çekici / Tractor	427.928.256	904.738.051	399.066.921	433.374.683	8,6
Tarım Traktörü / Farm Tractor	320.811.145	422.354.687	171.099.355	221.449.385	29,4
<b>Toplam / Total</b>	<b>29.093.001.491</b>	<b>32.231.877.842</b>	<b>16.766.312.875</b>	<b>15.589.465.410</b>	<b>-7,0</b>

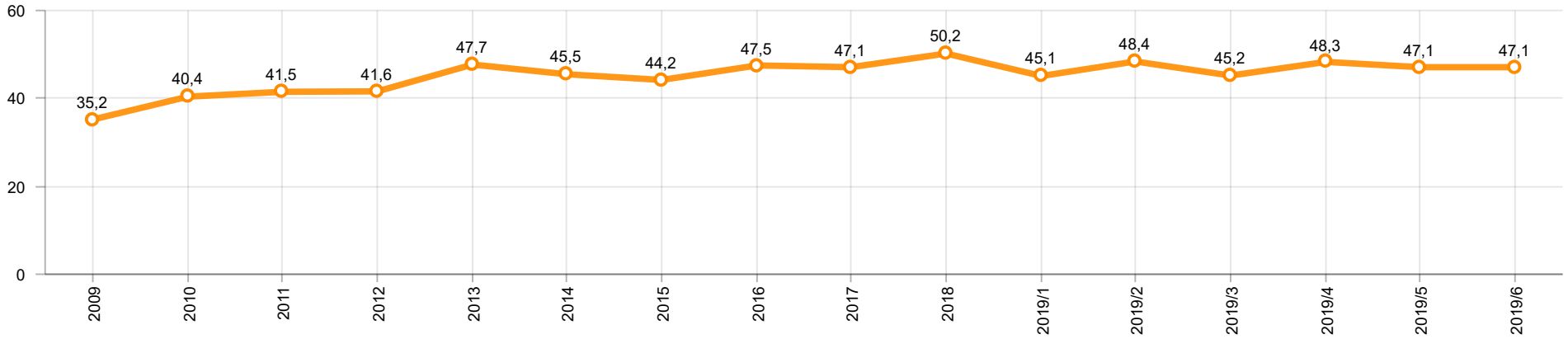
Kaynak: Uludağ İhracatçı Birlikleri . ÜİB tarafından OSD için özel olarak analiz edilen Otomotiv İhracatı kapsamında; ÜİB Türkiye Geneli Otomotiv Endüstrisi sınıflandırmasına kıyasla “Römork ve Yarı Römork” , “Tarım Traktörü” verileri dahil edilmekte; “Kullanılmış Araçlar” ,”İki Tekerlekli Taşıtlar” , “Demiryolu Taşıtları” hariç tutulmaktadır.

Source: Uludağ Exporters Association – Special Analyze for OSD.Compared to Turkish General Automotive Industry classification, this special analyze includes; farms tractors, trailers and semi-trailers, does not include; used vehicles, two-wheeled vehicles and railway vehicles

**Otomobil Pazarında İthalatın Payı (%)**  
**Import Share in P.Car Market (%)**



**Hafif Ticari Araçlar Pazarında İthalatın Payı (%)**  
**Import Share in LCV Market (%)**



Araç Tipleri / Vehicle Types	1	2	3	4	5	6	7	8	9	10	11	12	Toplam / Total
<b>OTOMOBİL - Pass.Car</b>	<b>58.807</b>	<b>69.340</b>	<b>81.736</b>	<b>66.084</b>	<b>80.233</b>	<b>62.846</b>							<b>419.046</b>
KAMYON - H. Truck	1.270	1.594	1.312	1.153	1.170	1.247							7.746
KAMYONET - Pick Up	27.735	29.855	31.222	33.326	26.072	29.659							177.869
OTOBÜS - Bus	801	637	822	753	958	649							4.620
MİNİBÜS - Minibus	4.741	4.836	5.012	4.630	3.278	2.396							24.893
MİDİBÜS - Midibus	74	93	135	58	152	82							594
<b>TİCARİ ARAÇLAR TOPLAMI - CV Total</b>	<b>34.621</b>	<b>37.015</b>	<b>38.503</b>	<b>39.920</b>	<b>31.630</b>	<b>34.033</b>							<b>215.722</b>
<b>TAŞIT ARAÇLARI TOPLAMI - MV Total</b>	<b>93.428</b>	<b>106.355</b>	<b>120.239</b>	<b>106.004</b>	<b>111.863</b>	<b>96.879</b>							<b>634.768</b>
TRAKTÖR - F.Tractor	1.111	1.145	1.516	1.207	1.551	1.382							7.912
<b>GENEL TOPLAM - Grand Total</b>	<b>94.539</b>	<b>107.500</b>	<b>121.755</b>	<b>107.211</b>	<b>113.414</b>	<b>98.261</b>							<b>642.680</b>

**Otomobil / P.Car**

Firmalar / Firms	1	2	3	4	5	6	7	8	9	10	11	12	Toplam / Total
FORD OTOSAN	1.469	1.837	2.405	2.671	2.064	2.021	-	-	-	-	-	-	12.467
HONDA TÜRKİYE	800	1.009	424	689	240	449	-	-	-	-	-	-	3.611
HYUNDAI ASSAN	11.414	14.050	13.200	9.050	18.750	14.850	-	-	-	-	-	-	81.314
OYAK RENAULT	20.009	24.138	35.569	21.457	26.820	22.749	-	-	-	-	-	-	150.742
TOFAŞ	7.636	8.517	7.730	10.743	11.140	8.882	-	-	-	-	-	-	54.648
TOYOTA	17.479	19.789	22.408	21.474	21.219	13.895	-	-	-	-	-	-	116.264
<b>TOPLAM - Total</b>	<b>58.807</b>	<b>69.340</b>	<b>81.736</b>	<b>66.084</b>	<b>80.233</b>	<b>62.846</b>	-	-	-	-	-	-	<b>419.046</b>

**Kamyonet / Pick-up**

Firmalar / Firms	1	2	3	4	5	6	7	8	9	10	11	12	Toplam / Total
A.I.O.S.	-	-	-	-	-	-	-	-	-	-	-	-	-
FORD OTOSAN	22.083	22.516	23.449	24.428	16.098	20.460	-	-	-	-	-	-	129.034
KARSAN	73	54	150	95	95	142	-	-	-	-	-	-	609
OTOKAR	-	-	25	10	15	17	-	-	-	-	-	-	67
<b>TOFAŞ</b>	<b>5.579</b>	<b>7.285</b>	<b>7.598</b>	<b>8.793</b>	<b>9.864</b>	<b>9.040</b>	-	-	-	-	-	-	<b>48.159</b>
<b>TOPLAM - Total</b>	<b>27.735</b>	<b>29.855</b>	<b>31.222</b>	<b>33.326</b>	<b>26.072</b>	<b>29.659</b>	-	-	-	-	-	-	<b>177.869</b>

**Minibüs / Minibus**

Firmalar / Firms	1	2	3	4	5	6	7	8	9	10	11	12	Toplam / Total
FORD OTOSAN	4.740	4.833	4.998	4.620	3.268	2.386	-	-	-	-	-	-	24.845
KARSAN	1	3	14	10	10	10	-	-	-	-	-	-	48
<b>TOPLAM - Total</b>	<b>4.741</b>	<b>4.836</b>	<b>5.012</b>	<b>4.630</b>	<b>3.278</b>	<b>2.396</b>	-	-	-	-	-	-	<b>24.893</b>

**Kamyon / Truck**

Firmalar / Firms	1	2	3	4	5	6	7	8	9	10	11	12	Toplam / Total
A.I.O.S.	-	30	-	175	29	-	-	-	-	-	-	-	234
FORD OTOSAN	114	141	166	161	221	175	-	-	-	-	-	-	978
KARSAN	-	-	-	-	-	-	-	-	-	-	-	-	-
M. BENZ TÜRK	1.156	1.423	1.146	817	920	1.072	-	-	-	-	-	-	6.534
<b>OTOKAR</b>	-	-	-	-	-	-	-	-	-	-	-	-	-
<b>TOPLAM - Total</b>	<b>1.270</b>	<b>1.594</b>	<b>1.312</b>	<b>1.153</b>	<b>1.170</b>	<b>1.247</b>	-	-	-	-	-	-	<b>7.746</b>

**Midibüs / Midibus**

Firmalar / Firms	1	2	3	4	5	6	7	8	9	10	11	12	Toplam / Total
A.I.O.S.	52	60	88	46	121	56	-	-	-	-	-	-	423
KARSAN	5	6	39	-	1	-	-	-	-	-	-	-	51
OTOKAR	8	21	8	12	16	25	-	-	-	-	-	-	90
TEMSA	9	6	-	-	14	1	-	-	-	-	-	-	30
<b>TOPLAM - Total</b>	<b>74</b>	<b>93</b>	<b>135</b>	<b>58</b>	<b>152</b>	<b>82</b>	-	-	-	-	-	-	<b>594</b>

**Otobüs / Bus**

Firmalar / Firms	1	2	3	4	5	6	7	8	9	10	11	12	Toplam / Total
A.I.O.S.	56	12	47	18	15	50	-	-	-	-	-	-	198
KARSAN	23	17	56	2	65	58	-	-	-	-	-	-	221
M. BENZ TÜRK	261	246	318	395	446	305	-	-	-	-	-	-	1.971
MAN TÜRKİYE	298	271	273	225	256	193	-	-	-	-	-	-	1.516
OTOKAR	104	69	108	93	94	23	-	-	-	-	-	-	491
TEMSA	59	22	20	20	82	20	-	-	-	-	-	-	223
<b>TOPLAM - Total</b>	<b>801</b>	<b>637</b>	<b>822</b>	<b>753</b>	<b>958</b>	<b>649</b>	-	-	-	-	-	-	<b>4.620</b>

**Traktör / F.Tractor**

Firmalar / Firms	1	2	3	4	5	6	7	8	9	10	11	12	Toplam / Total
HATTAT TRAKTÖR	39	72	108	43	48	40	-	-	-	-	-	-	350
TÜRK TRAKTÖR	1.072	1.073	1.408	1.164	1.503	1.342	-	-	-	-	-	-	7.562
<b>TOPLAM - Total</b>	<b>1.111</b>	<b>1.145</b>	<b>1.516</b>	<b>1.207</b>	<b>1.551</b>	<b>1.382</b>	-	-	-	-	-	-	<b>7.912</b>

Firmalar / Firms	2018 Toplam / Total	1	2	3	4	5	6	7	8	9	10	11	12	Toplam / Total
Alfa Romeo	203	8	16	32	23	50	60	-	-	-	-	-	-	189
Aston Martin	16	2	-	3	1	-	1	-	-	-	-	-	-	7
Audi	13.295	495	404	832	515	742	891	-	-	-	-	-	-	3.879
Bentley	10	2	-	-	1	1	-	-	-	-	-	-	-	4
BMW	12.728	352	463	871	724	445	637	-	-	-	-	-	-	3.492
Citroen	7.669	80	97	423	378	453	469	-	-	-	-	-	-	1.900
Dacia	26.193	429	801	1.765	910	970	1.569	-	-	-	-	-	-	6.444
DS	236	3	8	8	27	8	15	-	-	-	-	-	-	69
Ferrari	18	-	2	2	3	3	2	-	-	-	-	-	-	12
Fiat	1.264	26	26	65	80	157	99	-	-	-	-	-	-	453
Ford	20.697	235	476	1.452	774	676	1.232	-	-	-	-	-	-	4.845
Honda	4.862	144	149	253	281	276	203	-	-	-	-	-	-	1.306
Hyundai	19.113	794	1.195	1.508	1.089	1.141	1.123	-	-	-	-	-	-	6.850
Infinity	18	-	-	-	-	-	-	-	-	-	-	-	-	-
Jaguar	220	2	18	20	20	10	19	-	-	-	-	-	-	89
Jeep	2.430	100	162	225	138	92	168	-	-	-	-	-	-	885
Kia	7.694	150	331	534	357	204	205	-	-	-	-	-	-	1.781
Lamborghini	3	1	-	-	1	1	1	-	-	-	-	-	-	4
Land Rover	1.248	36	71	63	80	59	48	-	-	-	-	-	-	357
Lexus	56	4	4	2	3	2	3	-	-	-	-	-	-	18
Maserati	55	2	4	2	2	6	3	-	-	-	-	-	-	19
Mazda	1.005	29	29	15	31	45	18	-	-	-	-	-	-	167
Mercedes-Benz	14.445	204	701	1.005	563	728	1.021	-	-	-	-	-	-	4.222
Mini	1.373	17	50	176	91	92	169	-	-	-	-	-	-	595
Mitsubishi	514	38	60	41	34	30	26	-	-	-	-	-	-	229
Nissan	24.605	538	799	1.662	887	806	1.215	-	-	-	-	-	-	5.907
Opel	20.960	348	765	1.684	1.055	866	1.268	-	-	-	-	-	-	5.986
Peugeot	24.905	524	767	2.287	1.627	1.692	1.927	-	-	-	-	-	-	8.824
Porsche	565	9	35	27	29	31	24	-	-	-	-	-	-	155
Renault	21.090	198	557	822	490	552	718	-	-	-	-	-	-	3.337
Seat	10.383	139	289	515	269	295	547	-	-	-	-	-	-	2.054
Skoda	21.340	247	585	1.414	687	778	1.441	-	-	-	-	-	-	5.152
Smart	35	5	3	6	2	3	1	-	-	-	-	-	-	20
Ssangyong	222	10	15	14	6	9	11	-	-	-	-	-	-	65
Subaru	1.471	52	68	76	75	45	32	-	-	-	-	-	-	348
Suzuki	2.878	65	107	236	142	245	245	-	-	-	-	-	-	1.040
Toyota	3.405	47	114	132	103	103	94	-	-	-	-	-	-	593
Volkswagen	49.749	1.210	2.218	3.528	2.329	2.096	3.665	-	-	-	-	-	-	15.046
Volvo	5.943	231	225	334	360	300	392	-	-	-	-	-	-	1.842
<b>GENEL TOPLAM - Grand Total</b>	<b>322.916</b>	<b>6.776</b>	<b>11.614</b>	<b>22.034</b>	<b>14.187</b>	<b>14.012</b>	<b>19.562</b>	<b>-</b>	<b>-</b>	<b>-</b>	<b>-</b>	<b>-</b>	<b>-</b>	<b>88.185</b>

Firmalar / Firms	2018 Toplam / Total	1	2	3	4	5	6	7	8	9	10	11	12	Toplam / Total
<b>Citroen</b>	<b>4.633</b>	126	188	181	406	281	189	-	-	-	-	-	-	<b>1.371</b>
<b>Dacia</b>	<b>3.725</b>	53	182	296	179	136	170	-	-	-	-	-	-	<b>1.016</b>
<b>Fiat</b>	<b>3.019</b>	53	54	117	59	72	175	-	-	-	-	-	-	<b>530</b>
<b>Ford</b>	<b>2.783</b>	134	106	177	65	36	34	-	-	-	-	-	-	<b>552</b>
<b>Hyundai</b>	<b>1.493</b>	83	106	121	109	88	81	-	-	-	-	-	-	<b>588</b>
<b>Isuzu</b>	<b>578</b>	3	30	23	3	1	2	-	-	-	-	-	-	<b>62</b>
<b>Iveco</b>	<b>1.598</b>	48	54	115	109	95	134	-	-	-	-	-	-	<b>555</b>
<b>Karsan</b>	-	-	-	-	-	-	-	-	-	-	-	-	-	-
<b>Kia</b>	<b>1.947</b>	14	55	189	117	84	149	-	-	-	-	-	-	<b>608</b>
<b>Mercedes-Benz</b>	<b>7.993</b>	159	404	628	288	457	319	-	-	-	-	-	-	<b>2.255</b>
<b>Mitsubishi</b>	<b>3.445</b>	47	129	69	116	103	411	-	-	-	-	-	-	<b>875</b>
<b>Nissan</b>	<b>1.741</b>	82	48	150	135	26	41	-	-	-	-	-	-	<b>482</b>
<b>Opel</b>	-	-	-	43	112	41	55	-	-	-	-	-	-	<b>251</b>
<b>Peugeot</b>	<b>5.247</b>	197	284	819	431	379	333	-	-	-	-	-	-	<b>2.443</b>
<b>Renault</b>	<b>8.908</b>	180	342	741	304	191	211	-	-	-	-	-	-	<b>1.969</b>
<b>Ssangyong</b>	<b>174</b>	-	-	15	38	25	22	-	-	-	-	-	-	<b>100</b>
<b>Toyota</b>	<b>3.159</b>	55	101	91	65	71	90	-	-	-	-	-	-	<b>473</b>
<b>Volkswagen</b>	<b>17.085</b>	295	662	1.017	633	689	724	-	-	-	-	-	-	<b>4.020</b>
<b>GENEL TOPLAM - Grand Total</b>	<b>67.528</b>	<b>1.529</b>	<b>2.745</b>	<b>4.792</b>	<b>3.169</b>	<b>2.775</b>	<b>3.140</b>	-	-	-	-	-	-	<b>18.150</b>